



B BANDO

CRANE & CRANE COMPONENTS



⇒⇒⇒ www.bandohoist.com



BEFORE
SERVICE

POWER



반도 호이스트크레인
BANDO CRANES

Main Products

www.bandohoist.com



Wire Rope Hoist



Ex-proof Hoist



Chain Hoist



i-LIFTER



Crane



Conveyor



F/A System



Ci-LIFTER

Wire Rope Hoist & Explosion-proof Hoist

Mono-Rail Type	1/2ton~20ton
Double-Rail Type	2ton~140ton
Low-Head Type	0.5ton~5ton
Creep Type	1ton~140ton
Main & Aux. Hoist	5/2ton~100/60ton
Double Low-Head Type	2ton~7.5ton

Ceo Hoist

600 700 800 900 1,000 1,100 Series

Chain Hoist

CM, CS, CP, CG Type 0.25ton~20ton

Cranes

Hoist Crane	1/2ton~140ton
Crab Crane	5ton~200ton
Gantry Crane	1/2ton~140ton
Jib Crane	1/2ton~10ton

Components of Crane

Saddle Unit	160 ∅~800 ∅
Wheel Unit	160 ∅~800 ∅
Geared Motor	0.2kW~5.5kW
Soft Starter	
Load Limiter	

Tongs & Coil Lifter

Spool Hanger	5ton~40ton
Coil Lifter	10ton~40ton
C-Hook	5ton~30ton

Conveyor

Custom Engineered Conveyor Systems

F/A System

Automated Storage & Retrieval System



Ceο Hoist



Pendant Push Button Controllers

Load Limiter

Soft Starter

Geared Motor-A
(ET TYPE)

Geared Motor-B
(오투기 TYPE)

Geared Motor-C
(넙죽이 TYPE)



www.bandohoist.com

Wire Rope Hoist & Wire Rope
Explosion-proof Hoist
Chain Hoist
Cranes
Components of Crane
Tongs & Coil Lifter
Conveyor
F/A System

최고의 안전과 하역능력을 보장하는 bandohoist

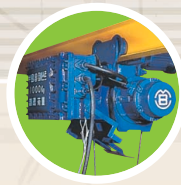
▶ Korea

산업안전보건법에는 모든 CRANE에 대하여 설계, 성능 및 완성검사를 받도록 되어 있으며 또한 검사에 합격된 제품에 한하여 사용할 수 있습니다.
당사는 그동안의 축적된 기술을 바탕으로 하여 항상 수요자가 만족할 수 있는 제품을 생산, 공급하고 있습니다.
특히 HOIST는 전기종이 산업안전공단의 성능검사에 이미 합격하였으므로 CRANE 완성검사시 HOIST자체에 대한 검사는 면제되므로 검사기간이 단축됩니다.

▶ English

Health Law for Industrial Safety regulates that all cranes receive inspection on designing, performance and inspection upon completion. Only the cranes that have passed the inspection are allowed to be used. Based on our technology we have been accumulating, our company produces and supplies products that our customers can always be satisfied.

Especially, in the case of HOIST, all the types have already passed the performance inspection of the Industrial Safety Corporation. At the time of completion inspection of CRANES, inspection to HOIST itself will be exempted. Therefore, the inspection period can be shortened.



CONTENTS

각종 크레인

- Hoist Crane_ 4
- Suspension Crane_ 8
- Crab Crane_10
- Gantry Crane_12
- Jib Crane_ 16
- Other Cranes_ 17

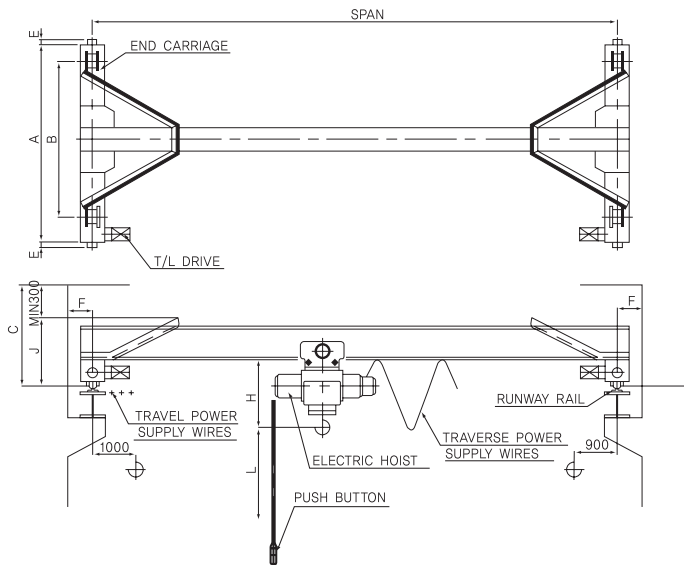
크레인 관련부품 및 기구

- End Carriage_ 18
- Push Button Controller_ 19
- Load Limiter_ 19
- Soft starter_ 20
- Geared Motor_ 21
- Tongs&Coil Lifter_ 22

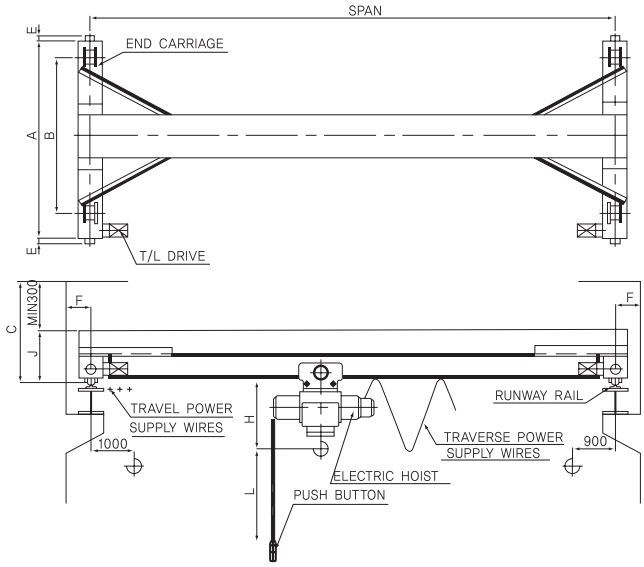


Single Girder Crane with Mono-Rail Hoist





MHO-IB



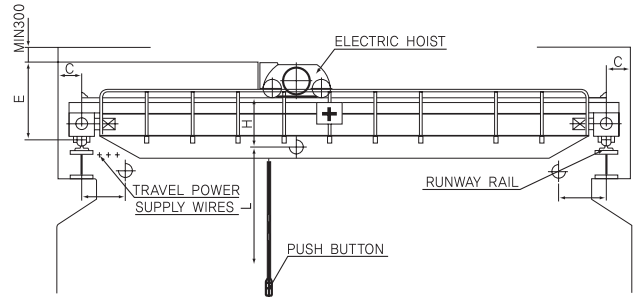
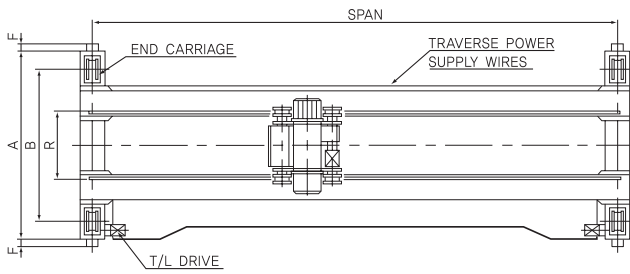
MHO-CV

Model	Capacity (ton)	Max. Span(m)	Lift L (m)	Speed(m/min.)/Motor(kw)			Approx. Dimensions(mm)						Travelling Wheel (mmØ)	Runway Rail (kg/m)												
				Hoisting	Traversing	Travelling	H	A	B	C	E	F			J											
MHO-00	0.5	9	6 or 12	6/0.6 or 12/1.2	16/0.2 or 24/0.4	16/0.5 or 24/0.75	705	1940	1500	1100	60	250	700	160	15											
		12						2440	2000	1300						800										
		15						2940	2500																	
		18						3440	3000																	
		21						3940	3500																	
		24						4440	4000																	
MHO-01	1	9		6 or 12		6/1.2 or 12/2.4	16/0.2 or 24/0.4	16/0.5 or 24/0.75	815	1940	1500	1100	60			250	700	160	15							
		12								2440	2000	1300								800						
		15								2940	2500															
		18								3440	3000															
		21								3940	3500															
		24								4440	4000															
MHO-02	2	9	6 or 12	5/1.8 or 10/3.7	16/0.2 or 24/0.4	16/0.5 or 24/0.75		980	1940	1500	1200	60	250	700	160	15										
		12							2440	2000	1300						800									
		15							2940	2500																
		18							3440	3000																
		21							3940	3500																
MHO-03	3	9		6 or 12				4.5/2.8 or 9/5.5	16/0.2 or 24/0.4	16/0.5 or 24/0.75	1115			1940			1500			1100	60	250	650	160	15	
		12	2440			2000	1200					800														
		15	2940			2500																				
		18	3440			3000																				
MHO-05	5	9	6 or 12			4.2/4.2 or 5.6/5.5	16/0.2 or 24/0.4	16/0.5 or 24/0.75			1325	1940	1500	1100			60	250	800	160			15			
		12										2440	2000	1300												200
		15		2940						2500																
MHO-10	10	9		6 or 12	3/6 or 4.5/9	16/0.2 or 24/0.4				16/0.5 or 24/0.75	1520	1940	1500	1200	60	250			900		315	22				
		12										2440	2000	1400												1100
		15										2940	2500													

Double Girder Crane with Double-Rail Hoist



CRANE & CRANE COMPONENTS 6

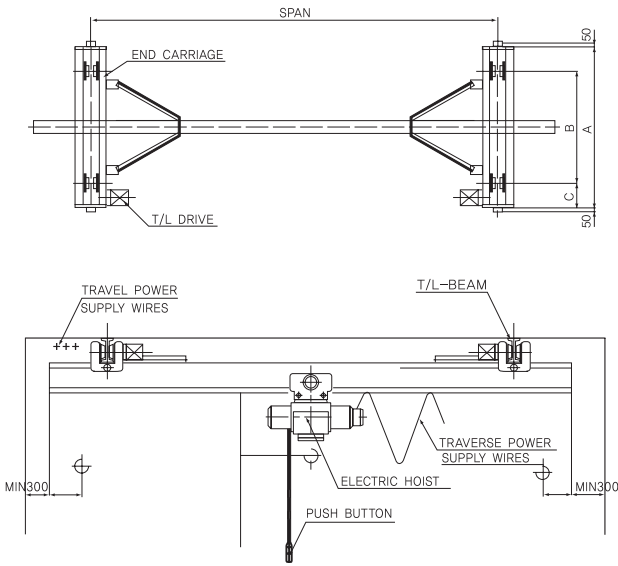


DHO-BOX

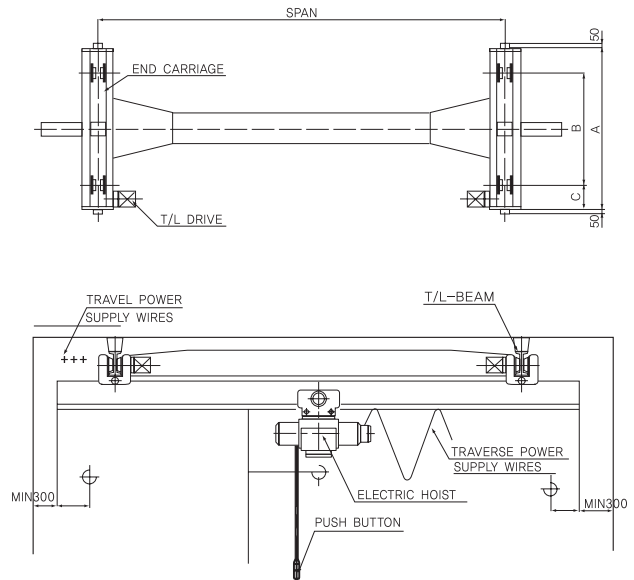
Model	Capacity (ton)	Max Span (m)	Lift L (m)	Speed(m/min.)/Motor(kw)			Approx. Dimensions(mm)							Travelling Wheel (mmø)	Runway Rail (kg/m)	
				Hoisting	Traversing	Travelling	H	A	B	C	E	F	R			
DHO-03	3	11	12	4.5/2.8 or 9/5.5	16/0.5 or 24/0.75	20/1×2 or 30/1.5×2	420	2440	2000	250	1200	60	950	160	15	
		15						3000	2500							
		18						3550	3000							
		21						4050	3500							
		24						4550	4000							
DHO-05	5	27		4.2/4.2 or 5.6/5.5	16/0.5 or 24/0.75	20/1×2 or 30/1.5×2	510	5050	4500	350	1700	100	1150	250	22	
		15						3050	2500							
		18						3550	3000							
		21						4050	3500							
		24						4600	4000							
		27	5100					4500								
DHO-10	10	30	12	3/6 or 4.5/9	10/0.5 or 15/0.75	20/1.5×2 or 30/2.2×2	750	5850	5000	400	1900	2300	315	22		
		14.5						20/1.5×2 or 30/2.2×2	3100						2500	
		18						20/1×2 or 30/1.5×2	3600						3000	
		21						20/1×2 or 30/1.5×2	4350						3500	
		24						20/1.5×2 or 30/2.2×2	4850						4000	
DHO-15	15	27		12	3/8.5 or 4.5/13	10/1 or 15/1.5	20/1.5×2 or 30/2.2×2	995	5350	4500	400	2300	1200	400	30	
		18							5850	5000						
		21							6100	5000						
		24							4350	3500						
DHO-20	20	30			12	2.8/11.5 or 4.2/17	10/1 or 15/1.5	20/1.5×2 or 30/2.2×2	1175	4850	4000	400	2300	1300	500	37
		15	3850							3000						
		21	4450							3500						
		24	4950							4000						
		27	5450							4500						
DHO-30	30	30	12			1.8/11.5 or 2.8/17	10/1×2 or 15/1.5×2	20/1×2 or 30/1.5×2	1480	6100	5000	450	2600	1800	630	50
		9.5		4450						3500						
		15		5000						4000						
		21		5700						4500						
DHO-50	50	30		12		3.2/33	10/1.5×2 or 15/2.2×2	20/2.2×4 or 30/3.7 ~5.5×4	1680	6300	5000	450	2800	2300	500×8	37
		10			6300					5000						
		15			5500					2900						
		22			5650					3000						
DHO-70	70	30			12	2.4/33	10/1.5×2 or 15/2.2×2	20/2.2×4 or 30/3.7 ~5.5×4	1780	5950	3200	450	2900	200	630×8	50
		9								5850	3300					
		15	6000							3400						
		22	6300							3600						
		30								6450	3700		3200	2800	710×8	73

Single Girder Suspension Crane with Mono-Rail Hoist





MHS-IB



MHS-CV

Model	Capacity (ton)	Max Span (m)	Lift L (m)	Speed(m/min.)/Motor(kw)			Approx. Dimensions(mm)				Travelling Wheel (mm ø)	Runway Rail									
				Hoisting	Traversing	Travelling	H	A	B	C											
MHS-00	0.5	7.5	6 or 12	6/0.6 or 12/1.2	16/0.2 or 24/0.4	15/0.5×2 or 22/0.75×2	705	1650	1250	280	125	I-BEAM 200×100×7t 250×125×7.5t 300×150×10t									
		1900						1500													
		2400						2000													
		2900						2500													
		3400						3000													
		3900						3500													
MHS-01	1	7.5		6 or 12	6/1.2 or 12/2.4		16/0.2 or 24/0.4	15/0.5×2 or 22/0.75×2	815	1650	1250		280	125	I-BEAM 200×100×7t 250×125×7.5t 300×150×10t						
		1900								1500											
		2400								2000											
		2900								2500											
		3400								3000											
		3900								3500											
MHS-02	2	7.5	6 or 12	5/1.8 or 10/3.7	16/0.5 or 24/0.75	15/0.5×2 or 22/0.75×2	980		1650	1250	280	125	I-BEAM 200×100×7t 250×125×7.5t 300×150×10t								
		1900							1500												
		2400							2000												
		2900							2500												
		3400							3000												
		3900							3500												
MHS-03	3	7.5		6 or 12	4.5/2.8 or 9/5.5		16/0.5 or 24/0.75	15/0.5×2 or 22/0.75×2	1115	1650	1250	280		125	I-BEAM 200×100×7t 250×125×7.5t 300×150×10t						
		1900								1500											
		2400								2000											
MHS-05	5	7.5			6 or 12				4.2/4.2 or 5.6/5.5	16/0.5 or 24/0.75	15/0.5×2 or 22/0.75×2					1325	2000	1500	280	125	I-BEAM 200×100×7t 250×125×7.5t 300×150×10t
		9															350	160			

Crab Crane



■ 크레인의 기본요목

1. 크레인의 원은 표 1에 의한다.
2. 주행레일에 대한 건축 한계 및 후크 최소접근 및 새들치수 또는 차륜중수는 표 2 및 그림 1~ 그림3에 의한다.
3. 크레인 한계와 건축 한계와의 틈 및 주집전기선의 위치는 그림 1과 같다.

■ Basic Requirements of Cranes

The basic requirements of the cranes shall be as follows:

1. The particulars of the cranes shall be as in Table 1.
2. The construction gauge for the travelling cranes and the side and upper clearances of the hook shall conform to Table 2 and Figs. 1 to 3.
3. The clearance between the crane gauge and the construction gauge, and the position of the main trolley wire shall conform to Fig. 1.

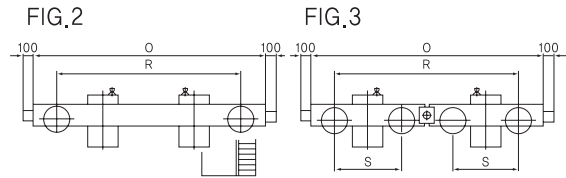
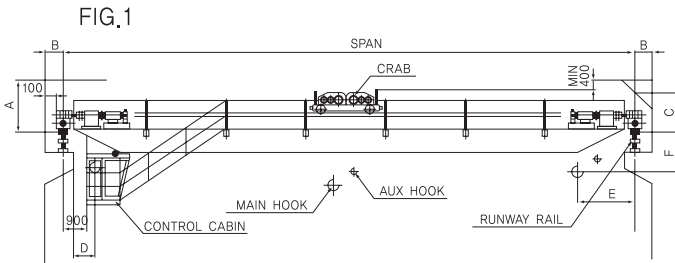


Table 1

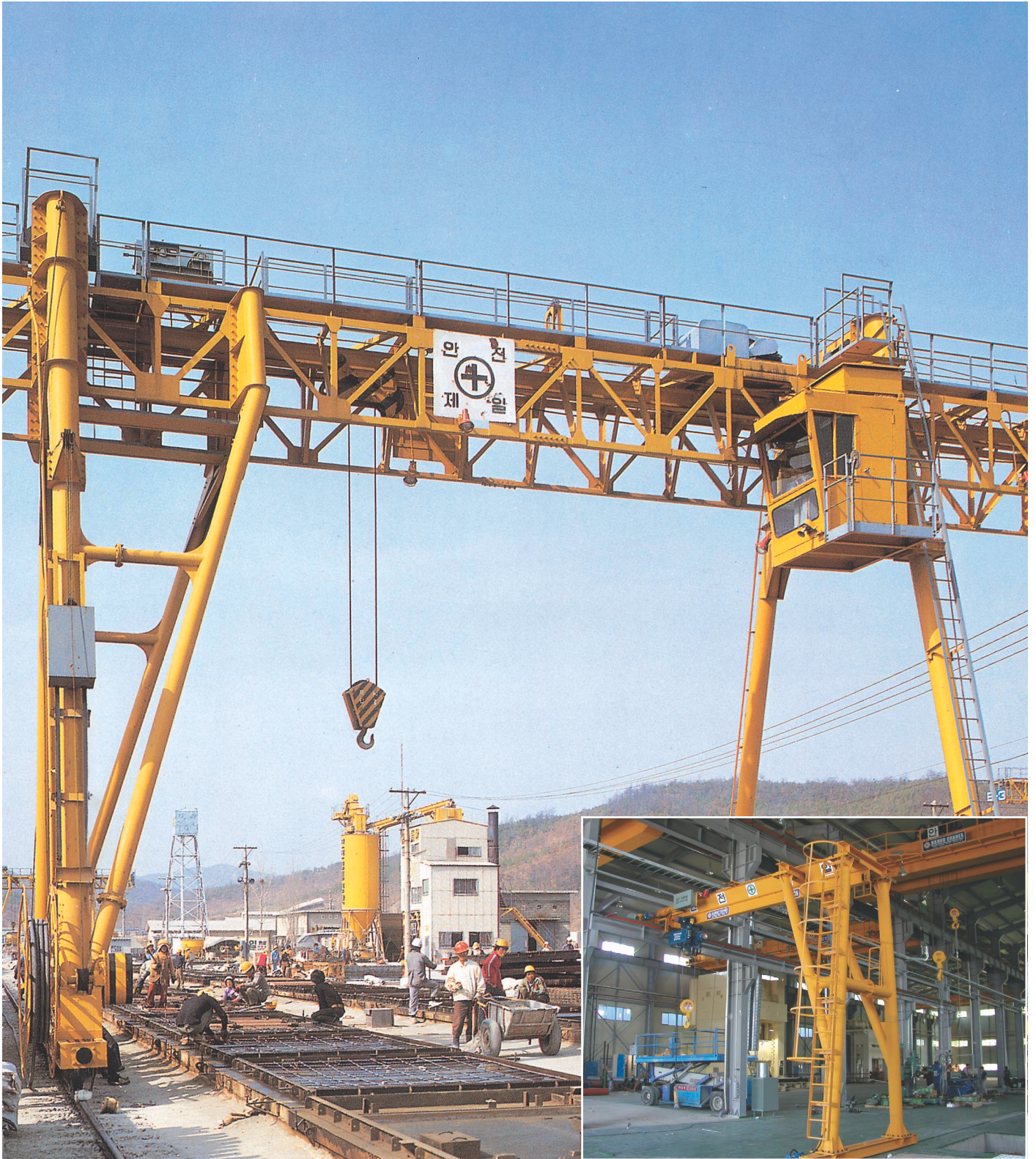
Type	Capa-city (ton)		Span (m)	Lift (m)	Main Hoist Speed×Motor (m/min)×(kw)	Auxiliary Hoist Speed×Motor (m/min)×(kw)	Traversing Speed×Motor (m/min)×(kw)	Travelling Speed×Motor (m/min)×(kw)	Runway Rail (Minimum) (kg/m)
	Main Hoist	Auxiliary Hoist							
Medium Speed Type	3	-	6-14	12	13×11	-	40×2.2	110×7.5	22
			15-24					90×7.5	
	5	-	6-14	12	12×15	-	40×2.2	110×11	22
			15-24					90×11	
	7.5	-	8-14	12	10×22	-	40×3.7	110×15	22
			15-24					90×15	
	10	-	8-14	12	8×22	-	40×3.7	100×22	30
			15-24					80×22	
	15	Nil or 3	8-14	12	8×30	13×11	40×5.5	100×15	30
			15-24					80×15	
	20	Nil or 3	10-16	12	6×30	12×15	35×5.5	100×22	30
			17-26					80×22	
	25	5	10-16	12	6×37	12×15	35×7.5	100×30	37
			17-26					80×30	
30	5	10-16	12	5×37	12×15	35×7.5	100×30	37	
		17-26					80×30		
40	10	12-18	12	5×50	8×22	35×11	100×37	50	
		17-26					80×37		
50	10	12-18	12	4×50	8×22	30×11	90×37	50	
		19-26					70×37		
60	10	12-26	12	3.2×50	8×22	25×11	70×37	73	
		12-26		2.4×50			70×37		
80	20	12-26	12	2.3×50	6×30	20×15	70×37	73	
		12-26		6×30			70×37		
100	20	12-26	12	2.3×50	6×30	20×15	70×37	73	
		12-26		6×30			70×37		

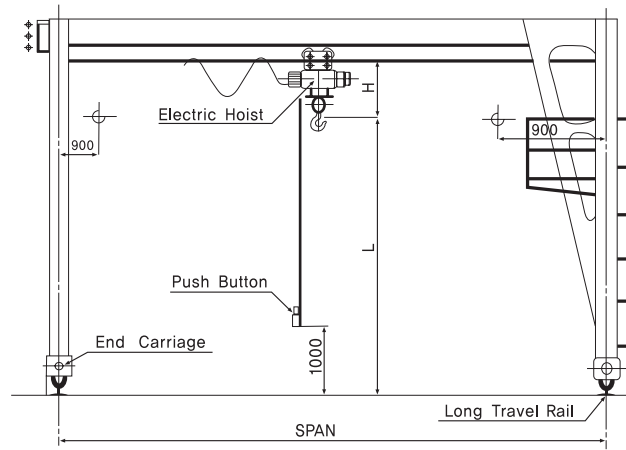
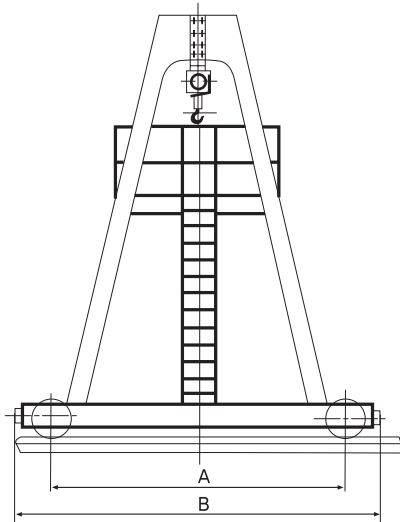
Table 2

Type	Capa-city (ton)		Span (m)	Construction Gauge (m)			Limit of main hook traverse nearest to the center of runway rails limit of lift of hook below the top of runway rail (mm)			End Carriage Reference(mm)			Total Number of Wheels (Reference)
				Vertical distance from the top of rail to the ceiling (A)	Distance from the center of rail to side wall (B)	Vertical distance from the top of rail to the construction gauge at the center of rail (C)	Lefthand side (cabinside) (D)	Righthand side (E)	Lift of hook below the top of rail side	Length (Q)	WheelBase		
	(Q)	(Q)											
Medium Speed Type	3	-	6-14	2400	350	1200	1000	1000	200	4050	3250	-	4
			15-24	2500		1300							
	5	-	6-14	2400	350	1400	1100	1100	300	4400	3500	-	4
			15-24	2500		1450							
	7.5	-	8-14	2400	350	1550	1200	1200	400	4400	3500	-	4
			15-24	2500		2500							
	10	-	8-14	2500	350	2500	1300	1300	500	4900	4000	-	4
			15-24	2600		2600							
	15	Nil or 3	8-14	2600	370	2600	1500	1500 (1600)	700	6000	5000	-	4
			15-24	2700		2700							
	20	Nil or 5	10-16	2700	400	2700	1800	1800 (1900)	800	6000	5000	-	4
			17-26	2800		2800							
	25	5	10-16	2800	400	2800	1900	2000	900	6350	5250	-	4
			17-26	2900		2900							
30	5	10-16	2900	400	2900	2000	2100	1000	6700	5500	-	4	
		17-26	3000		3000								
40	10	10-16	3100	400	3100	2100	2200	1100	6700	5500	-	4	
		17-26	3200		3200								
50	10	12-18	3300	400	3300	2200	2300	1200	7200	6000	-	4(73kg/mrails) 8(50kg/mrails)	
		19-26	3400		3400								
60	10	12-26	3500	380	3500	2300	2400	1300	6000	5000	-	8	
		12-26	3700		3700								
80	20	12-26	3700	450	3700	2500	2600	1400	6500	5500	1200	8	
		12-26	3900		3900								
100	30	12-26	3900	450	3900	2800	2800	1500	7200	6000	1300	8	
		12-26	3900		3900								

Single Girder Gantry Crane with Mono-Rail hoist

12
CRANE & CRANE COMPONENTS

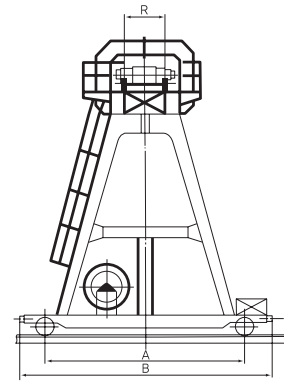
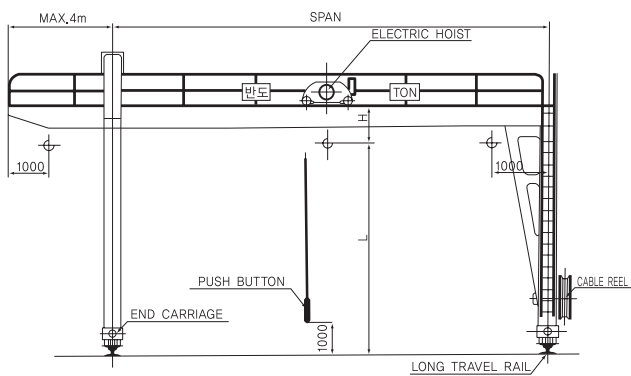
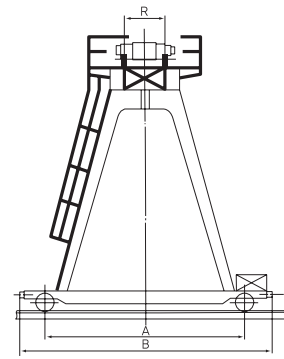
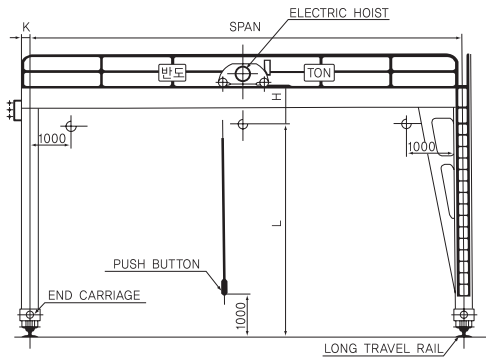




Model	Capacity (ton)	Max Span (m)	Lift L (m)	Speed/Motor (m/min.) (kw)			Approx. Dimensions(mm)			Travelling Wheel (mmø)	Runway Rail	
				Hoisting	Traversing	Travelling	H	A	B			
MHG-00	1	7.5	6 or 12	6/1.2 or 12/2.4	16/0.2 or 24/0.4	16/0.5×2 or 24/0.75×2	815	3500 ~ 5000	4000 ~ 5500	200	15 22	
		9										
		12										
		15										
		18										
		19.5										
		21										
22												
MHG-02	2	7.5		6 or 12	5/1.8 or 10/3.7	16/0.5 or 24/0.75	20/1×2 or 30/1.5×2	980	3500 ~ 4050	4000 ~ 4550		250
		9										
		12										
		15										
		17.5										
		18										
20.5												
MHG-03	3	7.5	6 or 12	4.5/2.8 or 9/5.5	16/0.5 or 24/0.75	16/0.5×2 or 24/0.75×2	1115	3500 ~ 4050	4000 ~ 5500	200		
		9										
		12										
		15										
MHG-05	5	7.5	6 or 12	4.2/4.2 or 5.6/5.5	16/0.5 or 24/0.75	20/1×2 or 30/1.5×2	1325	3500 ~ 4050	4000 ~ 4550	250		
		9										
		12										
MHG-10	10	7.5	12 or 18 or 24	3/6 or 4.5/9	10/0.5×2 or 15/0.75×2	20/1×2 or 30/1.5×2	1520	4000 ~ 5000	4600 ~ 5600	315		
		9										
		12										

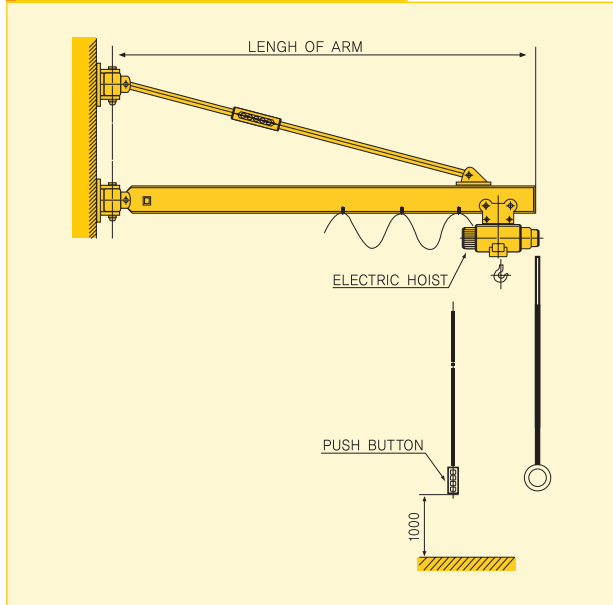
Double Girder Gantry Crane with Double-Rail Hoist



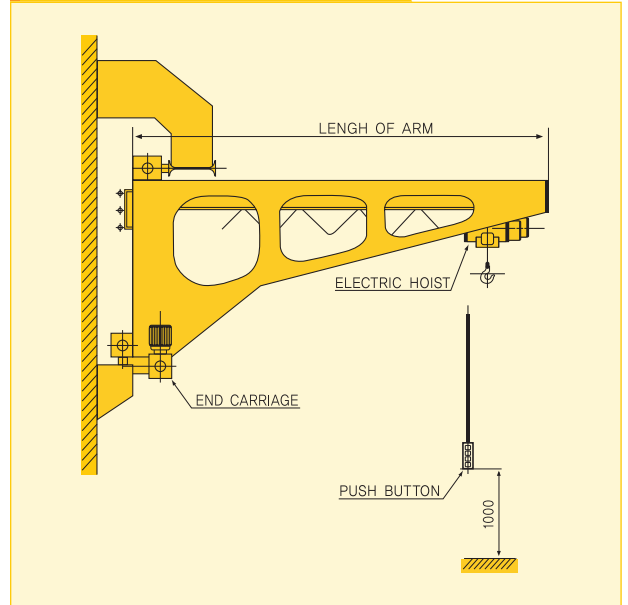


Model	Capacity (ton)	Max Span (m)	Lift L (m)	Speed/Motor (m/min.) (kw)			Approx. Dimensions(mm)				Travelling Wheel (mm ø)	Runway Rail		
				Hoisting	Traversing	Travelling	H	R	A	B				
DHG-03	3	15	12	4.5/2.8 or 9/5.5	16/0.5 or 24/0.75	20/1×2 or 30/1.5×2	420	950	4000 ~ 5000	4500 ~ 5500	250	22 30		
		17.5												
		20												
DHG-05	5	10		4.2/4.2 or 5.6/5.5	10/0.5 or 15/0.75	20/1.5×2 or 30/3.7×2	510	1150	4000 ~ 5000	4600 ~ 5600	315		400~500 4850~585	400
		12.5												
		15												
DHG-10	10	10		3/8.5 or 4.5/13	10/1 or 15/1.5	20/2.2×2 or 30/3.7×2	750	1150	4000 ~ 6000	4950 ~ 6950	500 630		995 1200	30 37
		12.5												
		15												
DHG-15	15	10		2.8/11.5 or 4.2/17	10/1×2 or 15/15×2	20/2.2×4 or 30/3.7~ 5.5×4	1175	1300	4000 ~ 6000	5100 ~ 7100	630 710 800		1480 1800	30 37
		12.5												
		15												
DHG-20	20	10	1.8/11.5 or 2.8/17	10/1.5×2 or 15/2.2×2	20/2.2×4 or 30/3.7~ 5.5×4	1680	2300	4000 ~ 6000	5200 ~ 7200	500×8 630×8 710×8	1780 2800	50		
		12.5												
		15												
DHG-30	30	9	3.2/33	10/1.5×2 or 15/2.2×2	20/2.2×4 or 30/3.7~ 5.5×4	1780	2800	6000 ~ 7000	9000 ~ 10000	500×8 630×8 710×8	73			
		12.5												
		15												
DHG-50	50	9	2.4/33	10/1.5×2 or 15/2.2×2	20/2.2×4 or 30/3.7~ 5.5×4	1780	2800	6000 ~ 7000	9000 ~ 10000	500×8 630×8 710×8	73			
		13												
		18												
DHG-70	70	28	2.4/33	10/1.5×2 or 15/2.2×2	20/2.2×4 or 30/3.7~ 5.5×4	1780	2800	6000 ~ 7000	9000 ~ 10000	500×8 630×8 710×8	73			
		30												
		20												

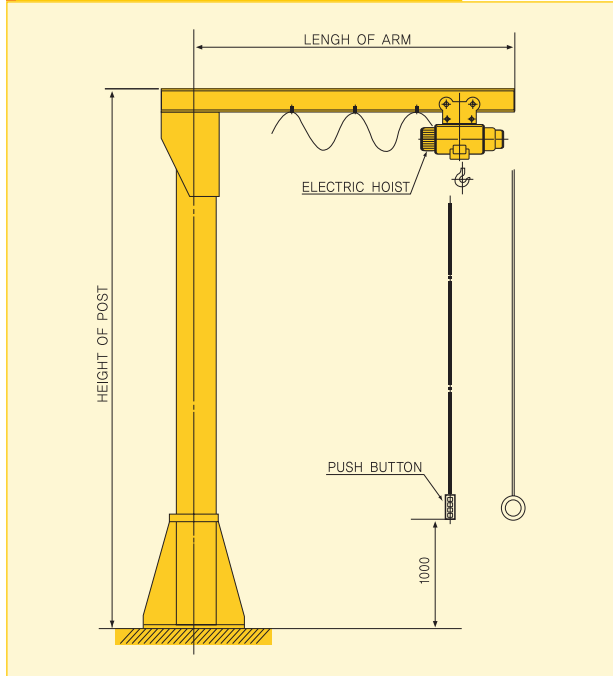
1. Wall-Mounted Slewing Jib Crane



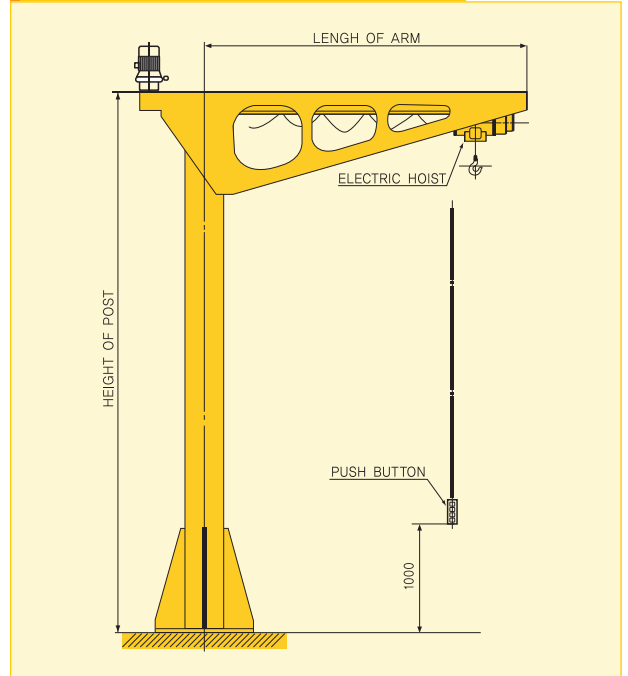
2. Wall-Travelling Jib Crane



3. Pillar-Mounted Slewing Jib Crane(A)



4. Pillar-Mounted Slewing Jib Crane(B)



1. Wall-Mounted Slewing jibs		
Capacity	1/2ton~3ton	
Working Area	Min.	0.8m
	Max.	6m
Traversing	16m/min.	
Slewing	Speed	Manual
	Angle	180°

2. Wall-Travelling Jibs		
Capacity	1/2ton~10to	
Length of Arm	n	
Traversing	Max. 6m	
Speed	16m/min.	

3. Pillar-Mounted Slewing Jibs(A)		
Capacity	1/2ton~2ton	
Working Area	Min.	0.8m
	Max.	3m
Traversing	16m/min.	
Slewing	Speed	Manual
	Angle	360°
Height of Post	Max. 6m	

4. Pillar-Mounted Slewing Jibs(B)		
Capacity	1/2ton~5ton	
Working Area	Min.	0.8m
	Max.	6m
Traversing	16m/min.	
Slewing	Speed	0.5rpm
	Angle	360°
Height of Post	Max. 6m	



:: 철재 운반용 MAGNET CRANE ::



:: 철구조물 생산공장 CRANE ::



:: 기계 조립공장 CRANE ::

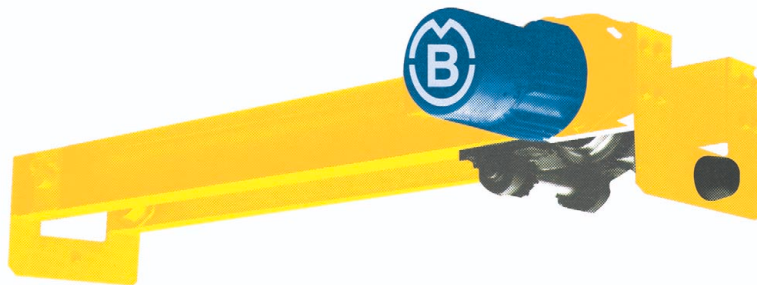


:: CONCRETE PILE 제조공장 CRANE ::



:: COIL 운반용 CRANE(COIL LIFTER) ::

End Carriage-Suspension Type

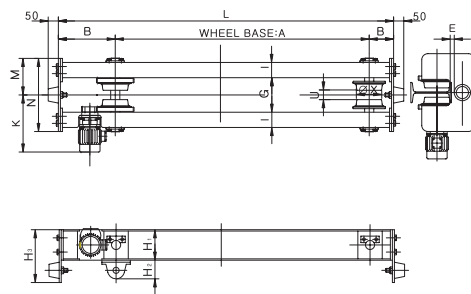


Runway Rail (I-Beam)
 200×100×7
 250×125×7.5
 300×150×10

Suspension Type

· Suspension Type : 125 ø, 160 ø, 180 ø

Travelling Wheel (MM ø)	Travelling Speed (M/MIN)		Travelling Motor (KW)	A	B	C	D	E
	High	Low						
125	22	15	0.75×2	1250	1650	280	120	150
			0.5×2	1500	1900			
160	22	15	0.75×2	1500	2000	350	150	200
				0.5×2	2000			
180	23	15	1.5×2	1500	2000	350	150	250
				1×2	2000			



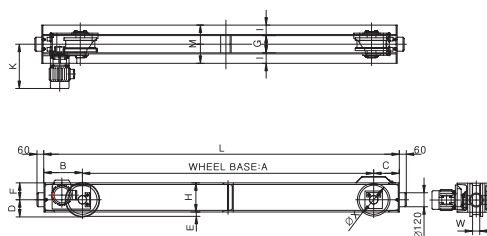
End Carriage-Overhead Type



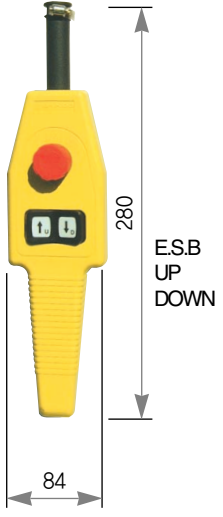

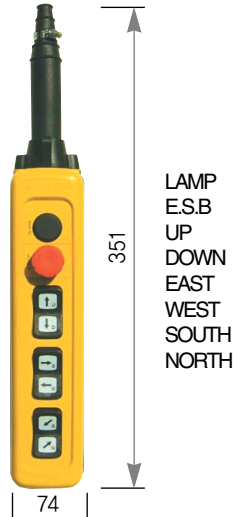
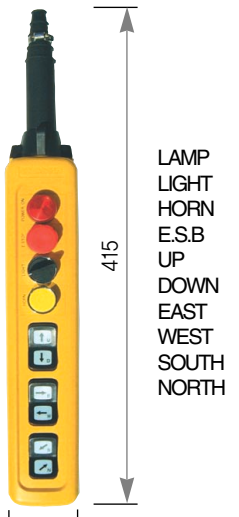
· Overhead Type : 160 ø, 200 ø, 250 ø, 315 ø

Wheel DTA (MM ø)	Travelling Speed (M/MIN)		Travelling Motor (KW)		Rail (KG /M)	Approx. Dimension							
	High	Low	High	Low		WB	A	B	C	D	E	F	G
160	24	16	0.75×2	0.5×2	15 22	1500	1900	140	300	210	111	422	240
						2000	2440						
						2300	2900						
						3000	3440						
						3500	3900						
200	24	16	0.75×2	0.5×2	15 22	2000	2500	200	300	210	116	427	300
						2300	3000						
						3000	3500						
						3500	4000						
250	30	20	1.5×2	1.0×2	22 30	2000	2550	220	330	210	121	469	350
						2300	3060						
						3000	3560						
						3500	4060						
315	30	20	1.5×2	1.0×2	22 30	3000	3600	250	350	260	143	489	400
						3500	4100						
						4000	4600						


Overhead Type



Pendant Push Button Controllers

3 POINT	6 POINT	8 POINT	10 POINT
 <p style="text-align: center;">Depth:54</p>	 <p style="text-align: center;">Depth:64</p>	 <p style="text-align: center;">Depth:64</p>	 <p style="text-align: center;">Depth:64</p>
<p>280</p> <p>E.S.B UP DOWN</p> <p>84</p>	<p>291</p> <p>HORN E.S.B UP DOWN EAST WEST</p> <p>74</p>	<p>351</p> <p>LAMP E.S.B UP DOWN EAST WEST SOUTH NORTH</p> <p>74</p>	<p>415</p> <p>LAMP LIGHT HORN E.S.B UP DOWN EAST WEST SOUTH NORTH</p> <p>74</p>
<p>특징 : 1) BANDO PUSH BUTTON S/W는 산업안전보건법에서 요구하는 제반기능 (E.M STOP, LAMP, HORN) 을 조립할 수 있는 LEVER TYPE (기계식 INTERLOCK) 의 견고한 제품입니다.</p> <p>2) 단일속도 SWITCH와 이중속도 SWITCH의 조립호환성이 있는 제품입니다.</p>		<p>1) BANDO PUSH BUTTON S/W is a LEVER TYPE (mechanical INTERLOCK) firm product that can assemble various functions (E.M STOP, LAMP, HORN) required by the Health Law of Industrial Safety.</p> <p>2) This is a product that has interchangeability of assembly between single speed SWITCH and double speed SWITCH.</p>	

Load Limiter (Digital Type)



Depth:58

CHAIN HOIST용

TYPE : BCDL-80
CAPACITY : 10ton이하
적용MOTOR
CHAIN HOIST 전기종
조작전압 : 110V~220V (Free)

WIRE HOIST용

TYPE : BDL-250
적용MOTOR
WIRE HOIST 전기종
조작전압 : 110V~220V (Free)

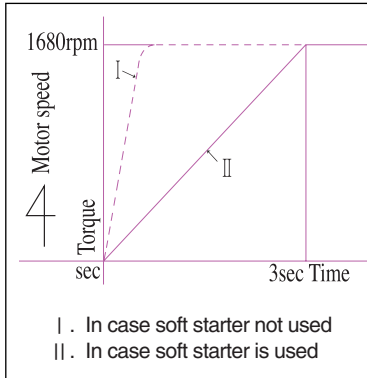
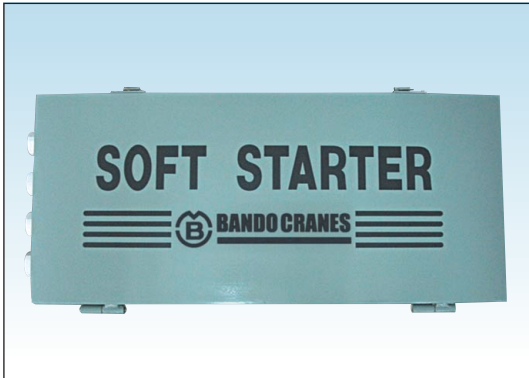
특징 : 1) BANDO LOAD LIMITER는 CHAIN HOIST 및 WIRE HOIST 등의 어떠한 제품에도 취부할 수 있도록 다양한 모델을 가지고 있습니다.

2) MICRO COMPUTER를 탑재하여 RESET TIME 지연 기능 및 과부하 상승시간을 기억하고 있으므로 동일 시간동안 하강하면 AUTO RESET가 되는 기능을 가지고 있습니다.

1) BANDO LOAD LIMITER has a various model such as CHAIN HOIST and WIRE HOIST, etc. to accommodate any kinds of products.

2) It has a MICRO COMPUTER which remembers the RESET TIME trial movement and overload ascending time. If it descends for a same amount of time, it has a function to change to AUTO RESET.

Soft Starter



Motor Model	Capacity(kw)		Power Source
	1Motor	2Motor	
SS-2230 SS-3830 SS-4430	1.0	0.5×2	220×60Hz 380×60Hz 440×60Hz
SS-2230 SS-3830 SS-4430	1.5	0.75×2	
SS-2230 SS-3830 SS-4430	3.0	1.5×2	
SS-2244 SS-3844 SS-4444	4.4	2.2×2	
SS-2275 SS-3875 SS-4475	7.5	3.7×2	

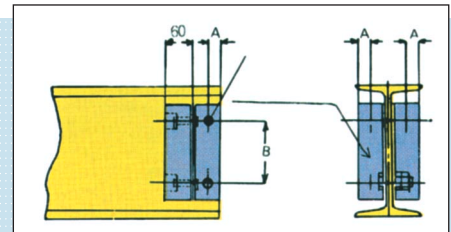
- 특징 :
- 1) BANDO SOFT STARTER는 CRANE 및 대차등의 시동시에 발생하는 충격을 없애고 SMOOTH한 출발로 기계의 수명을 연장합니다.
 - 2) SOFT STARTER는 THYRISTER를 이용한 완시동 장치로 단상제어 방식과 3상제어방식이 있습니다.
 - 3) BANDO NEW TYPE SOFT STARTER는 산업안전 보건법에서 규정하고 있는 MAIN MCCB 및 MAIN MAG, CONTACTOR 등을 내장하여 별도의 MAIN INCOMING SWITCH BOX가 필요 없습니다.

- 1) BANDO SOFT STARTER eliminates the impact which occurs when CRANES and large carts are started and it extends the life of machines with SMOOTH start.
- 2) SOFT STARTER is a complete starter device using THYRISTER and it has 1 form control method and 3 forms control method.
- 3) BANDO NEW TYPE SOFT STARTER is included to MAIN MCCB, MAIN MAG, CONTACTOR and so on, in health law for industrial safety regulates. It's not need MAIN INCOMING SWITCH BOX.

Power Feeding System



Installation of Stopper



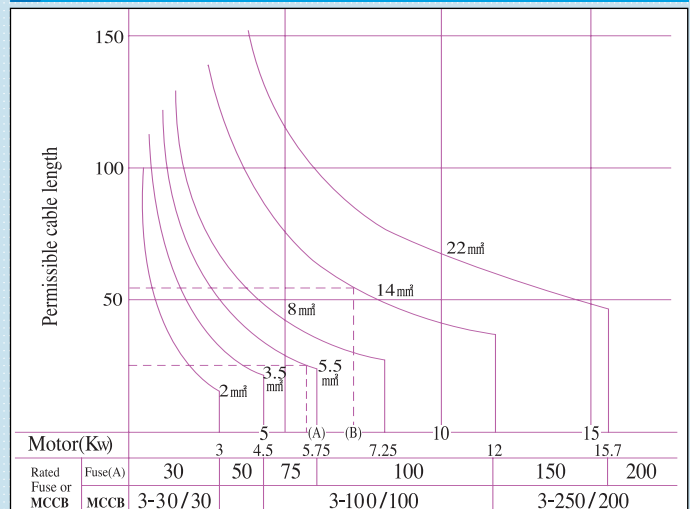
I-beam (mm)	150 x 75	200 x 100	250 x 125	300 x 150	300 x 150	400 x 150	450 x 175
Angle beam (mm)	50×50×6			65×65×6			
A (mm)	22			30			
B (mm)	75	105	110	140	190	230	280
d (mm)	M 11	M 16	M 16	M 20	M 20	M 20	M 20

Max.permissible span for traverser rails(m)

I-beam size A x B x t	Allowable Span of Standad BH hoist by Capacities (m) (Supported at both ends)				
	1/2 t	1 t	2t	3 t	5 t
200 × 100 × 7	5.8	4.1	2.9	2.3	-
250 × 125 × 7.5	8.9	6.3	4.4	3.6	-
300 × 150 × 10	14.0	9.9	7.0	5.7	4.4
350 × 150 × 9	15.3	10.8	7.6	6.2	4.8
350 × 150 × 12	18.6	13.2	9.3	7.6	5.9
400 × 150 × 10	19.2	13.6	9.6	7.8	6.1
400 × 150 × 12.5	22.1	15.6	11.0	9.0	7.0
450 × 175 × 11	-	-	-	-	7.7
450 × 175 × 13	-	-	-	-	8.6
Min. radius of	1.5	1.5	1.8	1.8	2.3

(I-Beam 허용최대 Span)

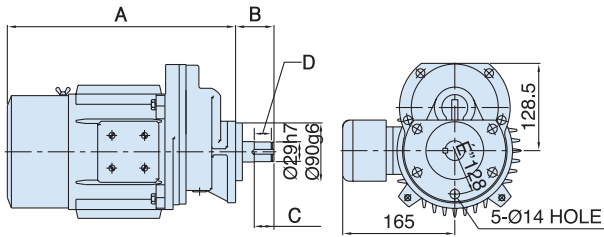
Max.permissible length for Cabtyre cable



(Cabtyre cable 사용길이 및 Fuse 용량)

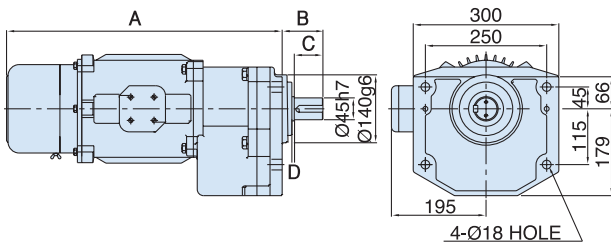
Geared Motor

오투기 TYPE



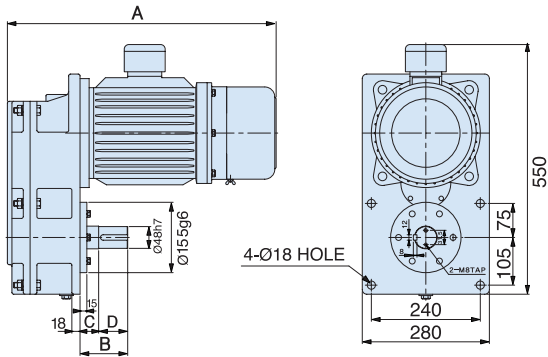
CAP	0.5KW×6P	1KW×6P	
DIMENSIONS	0.75KW×4P	1.5KW×4P	
A	336	371	
B	56.5	77.5	87
C	29	34	64
D	25	30	60
REDUCE RATIO	1/8.4, 1/12.12, 1/16.36		

ET TYPE



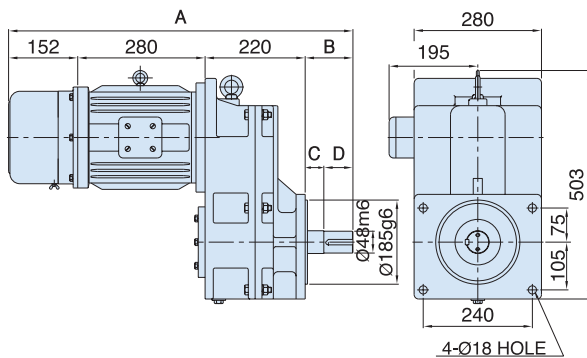
CAP	1.5KW×6P, 2.2KW×4P
DIMENSIONS	
A	565
B	84
C	59
D	5
REDUCE RATIO	1/20.26

납축이 A TYPE



CAP	2.2KW×6P, 3.7KW×4P
DIMENSIONS	5.5KW×4P
A	592
B	105
C	41
D	64
REDUCE RATIO	1/22

납축이 B TYPE



CAP	2.2KW×6P, 3.7KW×4P
DIMENSIONS	5.5KW×4P
A	757
B	105
C	41
D	64
REDUCE RATIO	1/22

특징 : 1) 고정도 GEAR를 사용한 GEARED MOTOR로 정속한 운전 및 쾌적한 작업환경을 보장합니다.
2) 사용자의 용도에 따라 단일속도, 이중속도등 선택 사용할 수 있습니다.

1) GEARED MOTOR with high standard GEAR guarantees quiet operation and comfortable work environment.
2) The user can choose between single speed and double speed according to purpose of usage.

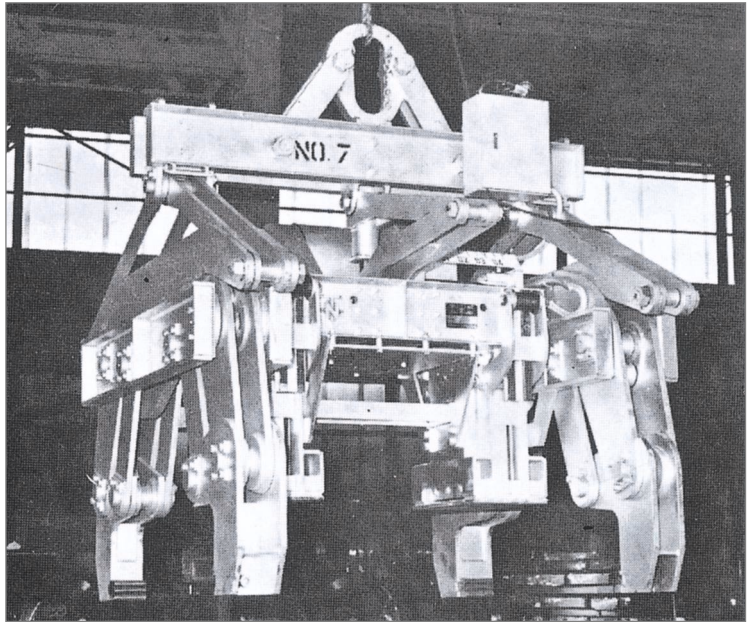
TONGS와 COIL LIFTER는 제철소, 조선소, 목재공장 등에서 각종 중량물의 운반을 효율적으로 할 수 있도록 특수하게 설계 제작된 CRANE용 LIFTER로서 특히 제철소의 다음 분야에서 광범위하게 사용되고 있습니다.

■ **철강공장**

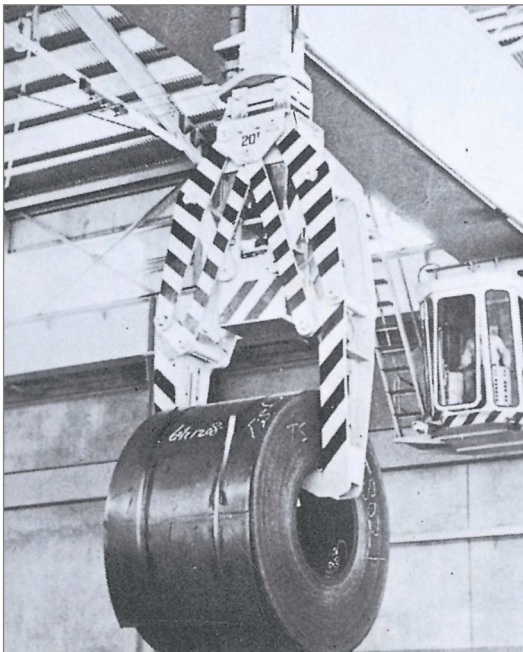
- MULTIPLE INGOT PORTABLE
- STRIPPER
- INGOT운반용 TONGS
- MOLD운반용 TONGS

■ **압연공장**

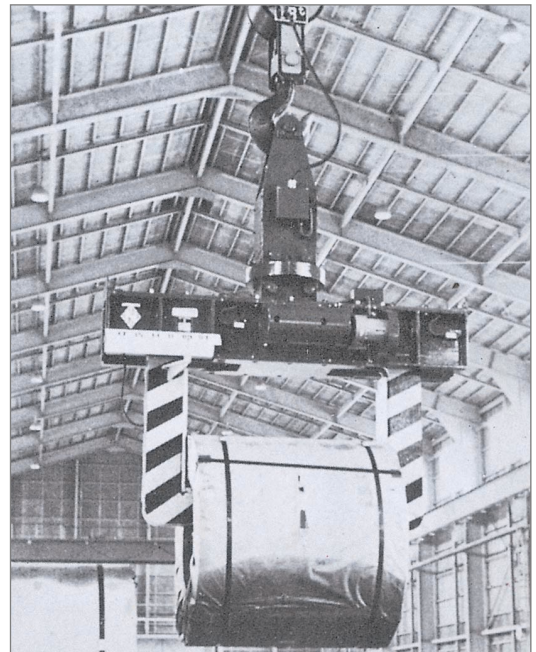
- SLAB운반용 각종
- 열연, 냉연, COIL운반용 LIFTER
- 열연, 냉연, SHEET운반용 LIFTER



Slab Tong



Linkage Type Coil Lifter



Rack-Pinion Type Coil Lifter



대한민국 운반하역 기계의 선구자 ——

반도 호이스트크레인

425-851 경기도 안산시 단원구 원시동 735 5B-2L
425-851 5B-2L, 735 Wonsi-Dong, Danwon-Gu
Ansan City, Gyeonggi-Do, Korea

www.bandohoist.com

TEL. 1588-3701(代) FAX. 031)495-8353

Control No	: HC-2003-C2
Rev.	: 01
Print	: 2008. 04. 24

※ 본 카탈로그상의 내용은 제품의 품질개선을 위하여 사전 예고없이 변경될 수 있습니다.
It may change the specification on the brochure with out notice in advance for the purpose of quality improvement.